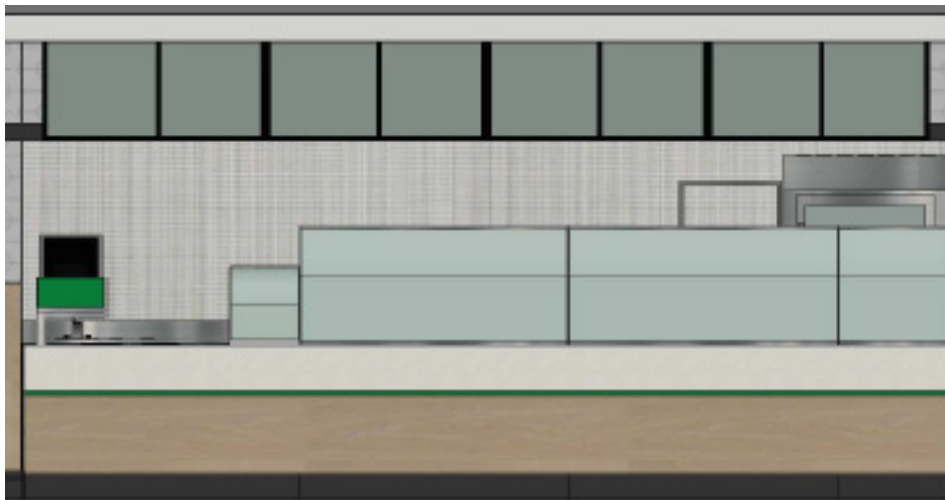


Determining Left vs. Right Front Counter Units

Key Points

- Hot Food or Point of Order from the employee's view to the customer determines if a Front Counter line-up is a Left hand or Right hand line-up
- All units for the line-up will be marked as a Left hand or Right hand line-up, including the Cashier Unit.
ie: Left Hot Food = Left hand Line-up = Left Cash Unit

CUSTOMER VIEW



EMPLOYEE VIEW

