

# Required Information About Remaining Equipment

Completing this form ensures proper decor lengths are sent, new equipment will fit next to existing, and helps avoid delays in order processing

STORE #: \_\_\_\_\_ SUBMITTED BY: \_\_\_\_\_

**FRANCHISEE**

NAME: \_\_\_\_\_ PHONE: \_\_\_\_\_ EMAIL: \_\_\_\_\_

**BDA CONTACT**

NAME: \_\_\_\_\_ PHONE: \_\_\_\_\_ EMAIL: \_\_\_\_\_

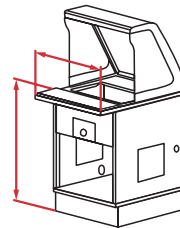
Please complete the following information on all **EXISTING** Front Counter Equipment that is being **RE-USED** in store only:  
(No need to include information on equipment that is being replaced) (check "Helpful Tips" on the next page for measuring guidance)

The Front Counter is a: Left Right (Determined from sandwich artists' point of view beginning at the point of order)

Are you re-using an existing Hot Food Section? Yes No

HEIGHT: 34" or 36"

MODEL# \_\_\_\_\_ SERIAL# \_\_\_\_\_



**HOT FOOD**

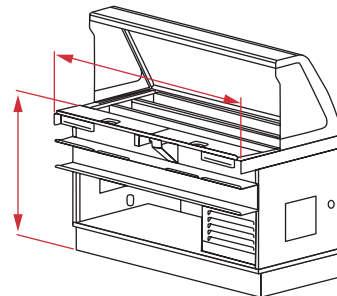
**Length:** standard sizes are between 16.5"-61"  
**Countertop height\*:** standard sizes are 34" & 36"  
*\* measured from the top of the cutting board to the floor*

Are you re-using an existing Tri-Channel Cold Section? Yes No

HEIGHT: 34" or 36"

MODEL# \_\_\_\_\_ SERIAL# \_\_\_\_\_

MODEL# \_\_\_\_\_ SERIAL# \_\_\_\_\_



**TRI-CHANNEL**

**Length:** standard sizes are between 48", 60", 74" & 86"  
**Countertop height\*:** standard sizes are 34" & 36"  
*\* measured from the top of the cutting board to the floor*

Are you re-using an existing Cashier Section: Yes No

HEIGHT: 34" or 36"

MODEL# \_\_\_\_\_ SERIAL# \_\_\_\_\_

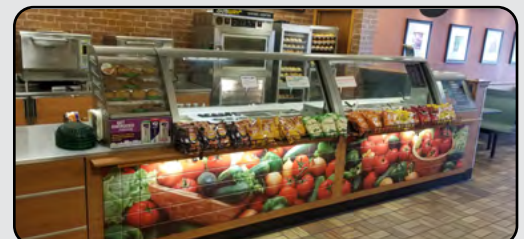
Are you re-using an existing extension? Yes No

HEIGHT: 34" or 36"

MODEL# \_\_\_\_\_ SERIAL# \_\_\_\_\_

If model # is not available please provide LENGTH and HEIGHT measurements.

INCLUDE PHOTOS OF THE FRONT COUNTER from both customer and employee view (as shown below)



This form **must** be completed and submitted when your order is placed. Fill out and save PDF or scan/photograph completed form and email to: [subwayorders@dukemfg.com](mailto:subwayorders@dukemfg.com) & copy your BDA office.

For questions about the form or if you require a custom quotation, contact: **Mary Clippard** at [mclippard@dukemfg.com](mailto:mclippard@dukemfg.com) or ph. 800-735-3853 ext. 1443

## Front Counter

## Determining the Correct Height of the Existing Front Counter Unit

Front Counter Units have been manufactured in 2 heights: 34" & 36"

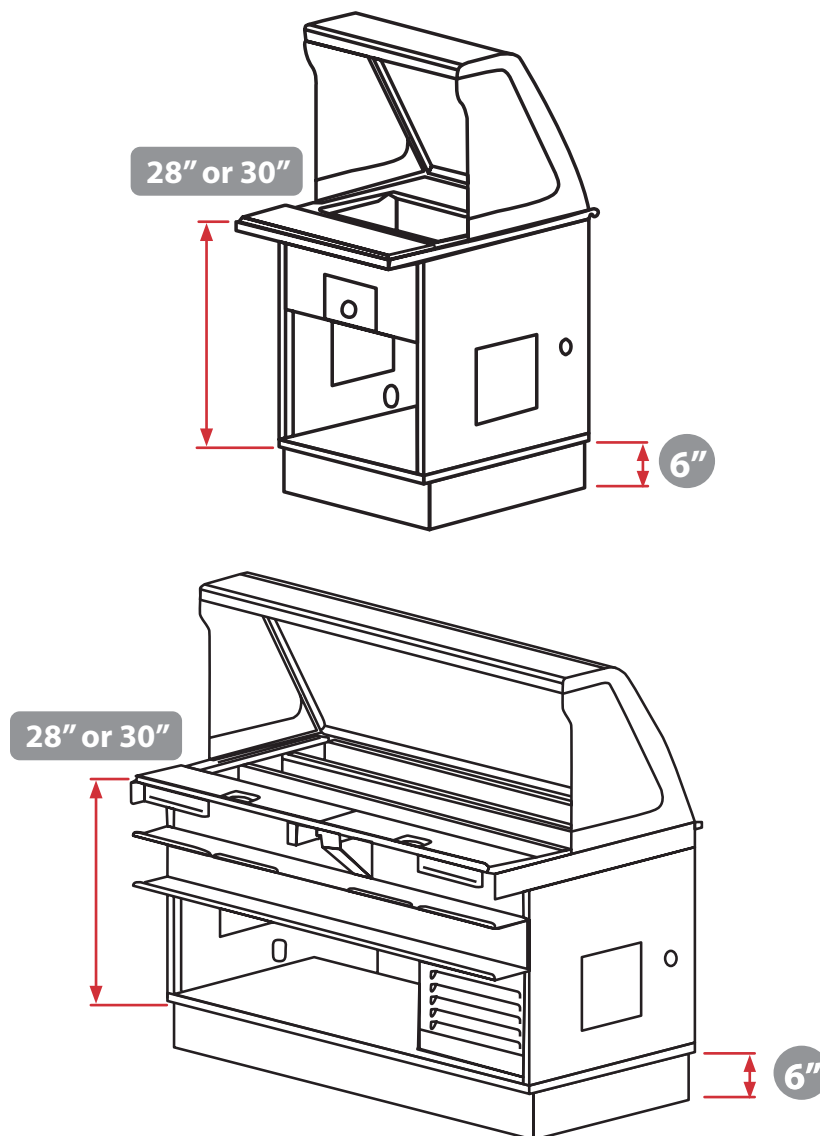
New line-ups ordered *after 2019* are generally 34" high unless they were ordered to go next to an existing unit that was 36" high

Most units ordered *prior to 2019* units are generally 36" high unless a 915 Workstation was utilized

## Key Measuring Tips

**All units ship on 6" Adjustable Legs** (legs are adjustable up to  $\frac{3}{4}$ " for leveling once in the store)

**Only the body heights vary;** the body height will be either 28" high or 30" high when measuring from the working surface to the bottom of the cabinet (legs **not** included)



## Front Counter Continued

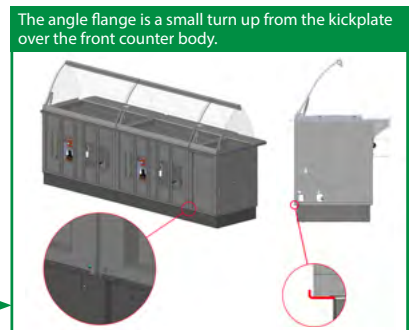
- **Replacement Tri-Channels**—Standard heights are 34" and 36" and can not be adjusted in the field. When replacing a tri-channel, ensure the height of the unit ordered is the same height as the existing equipment.
- **A left or right front counter** is determined by the location of the "point of order" when standing on the Sandwich Artist's side of the counter facing the customer. The entire line-up will be Right or Left.  
**Example:** *If the point of order is to the right of the sandwich artist, the Hot Food, Soup Counter, Cash section, and décor are all right handed.*
- If keeping your existing **Cashier Section**, note on the remodel form the height (34" or 36"). Measurements are taken from the floor to the cash section top.
  - Older units prior to 2003 are typically 36" tall
  - 34" cashier units frequently have a flange on the end between the cash unit and the adjacent cabinet. See photo. →  
This flange will need to be removed in the field if new 34" high Tri-channels are being ordered.
- All **Extension Units** that are part of the front counter must have the same type of top as the cash section. Both surfaces will either be Solid Surface or Stainless Steel and can not be intermixed. *All extensions with a solid surface top must be quoted.*



## Décor

**When placing an order for a remodel, the Remodel Form must be filled out completely/accurately and be included with the purchase order.** This step will minimize delays and help to ensure the correct décor package is shipped and will match any existing units. *When completing the remodel form, existing equipment height as well as the model # and serial # are necessary to ensure the correct height décor panels are provided as they cannot be adjusted in the field. (see page 3 of this document for assistance in locating the model/serial # of your equipment)*

- **New Kickplates** are required if your existing ones do not have the angle flange to accept the bracket on the décor panel (*likely a front counter installed prior to 2003*) and may be preferred if the current front counter has tile attached. The angle flange is a small turn up from the kickplate over the front counter body.



- **Fresh Start Laminate Décor Panels\***—To order the correct length, add up the length of all of your front counter units including your cash section and/or any extensions. Décor is to cover the entire length of the lineup.
- **Fresh Forward Solid Surface Décor Panels\***—To order the correct length, add up the length of your front counter units excluding your cash section and/or any extensions. These units include the décor panel. *Can only be used when the cashier unit has a solid surface top.*

\* When ordering décor, choose the length that corresponds with total number of feet. For example, if the measurements are 17' 9", choose the 17ft option.

- **Traditional Cash Sections** with stainless steel tops DO NOT have an option for décor with integrated chip shelves.
- **End Walls**—Be sure to order the correct wall as there are both Rear and Front Walls available.
  - **Rear Walls** are intended to be butted up to a full height wall in the restaurant and attached by the contractor. These walls will have one unfinished end that goes up against the wall.
  - **Front Walls** are located next to a Cashier Unit, and are finished on both ends.

## Beverage Units

- **Replacement Panels for Remodel**—Prior to ordering the beverage counter laminate replacement kits, please verify the depth of the cabinet. An original beverage counter is typically 30" deep, but the "Beverage Destination" made available in 2004 is a 38" deep counter. These kits are NOT interchangeable, so it is important to select the correct kit for your restaurant. *Please note that both front and side panels are included with the beverage counter panel kits.*

## Back Counters

- **Replacement Panels**—The SS Back Counter Panel Kits are set up for each standard size counter (*sizes on page 3 of this document*). They include the edge trim and the panels needed for the doors only. If the sides of your cabinet are exposed, you will need to also order an end panel kit to replace the trim and panel on the side that is exposed.
- **Refrigerated back counters** have specific panel kits that must be ordered. The standard back counter panel kits will not work on the 48" or 60" Refrigerated Back Counter Units.

Standard Lengths

- CASHIER—37", 49", 61", 73"
- COLD PAN—48", 60", 74", 86"
- HOT FOOD—18", 25", 37", 49"
- BREAD CABINET—24"
- EXTENSIONS—12", 13", 24", 25", 36", 37", 48", 49", 60", 61"
- DÉCOR PACKAGE—Décor varies on overall front center length
- BEVERAGE DESTINATION—48", 60", 72", 84", 96" (Depth 38")
- BACK COUNTERS/BEVERAGE COUNTERS—24", 36", 48", 60", 72" (Depth 30") (sinks available on left, right or center)
- WORK TABLES—24", 36", 48", 60", 72", 84", 96", 108", 120" (Depth 30")

Data Tag Locations

BREAD CABINET



Data tag located lower inside left panel

EXTENSION



Data tag located on inside top left panel

HOT FOOD



Data tag located to right of control knob

CASHIER



Data tag located on inside top left panel

COLD PAN



Data tag located on inside right panel



DUKE CORPORATE  
UNITED STATES, CANADA  
2305 N. Broadway  
St. Louis, MO 63102

Toll Free: 1.800.735.3853  
Phone: 314.231.1130  
Fax: 314.231.5074

dukemfg.com  
© Duke Manufacturing Co. 2019