



Your Solutions Partner

# Specifications

F.O.B. Sedalia, Missouri 65301



Model - RBC-60-DOE-120V



### OPTIONS:

- Casters
- Anti-sweat mullion heaters
- Replaceable laminate door and side panels

### Certifications:



DUKE MANUFACTURING CO.

2305 N. Broadway

St. Louis, MO 63102

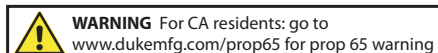
800.735.3853 Toll Free

314.231.5074 Fax

www.dukemfg.com

SS-1085 Refrigerated Back Counter 48-60

Specification subject to change



**Approval Stamp(s):**

### PRODUCT INFORMATION:

PROJECT: \_\_\_\_\_

ITEM: \_\_\_\_\_

QUANTITY: \_\_\_\_\_

### MODEL:

Refrigerated Back Counter - RBC

- RBC-48 M DOE-120V
- RBC-60 M DOE-120V
- RBC-48 M -220V
- RBC-60 M -220V
- RBC-48 M -230V
- RBC-60 M -230V

### TOP:

- One piece, 16 gauge, 300 Series stainless steel
- Stainless steel top capable of supporting 500 lb top load

### BODY:

- Laminate stainless steel doors and side panels
- Separate compartment door for access to controls and routine maintenance
- Adjustable powder coated kick plates
- Adjustable legs with 1.125" adjustment

### REFRIGERATION CABINET:

- Enclosed refrigerated cabinet
- 2 doors
- Insulated doors with replaceable gasket
- Full length solid rod hinge design for durability
- 300 Series stainless steel interior
- Insulated with environmentally friendly foam insulation with zero Ozone Depleting Potential (ODP), zero Global Warming Potential (GWP), and is Kyoto and Montreal protocol compliant
- Cabinet will hold food cold in the range of 33F – 40F
- Plastic coated wire shelves supplied
- Interior storage is 17.03 cubic feet per the RBC-60
- 300 series s/s sauce bottle holders on inside of both doors. Removable for cleaning

### REFRIGERATION SYSTEM:

- Refrigeration system is self-contained and replaceable as a complete unit if necessary
- Forced air, evaporator coiled system
- Washable and re-usable filter accessible from the front of the unit

REFRIGERATED BACK COUNTER: RBC-48-60M

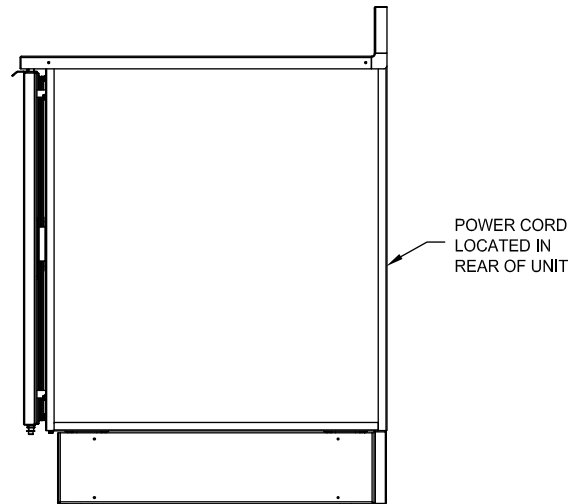
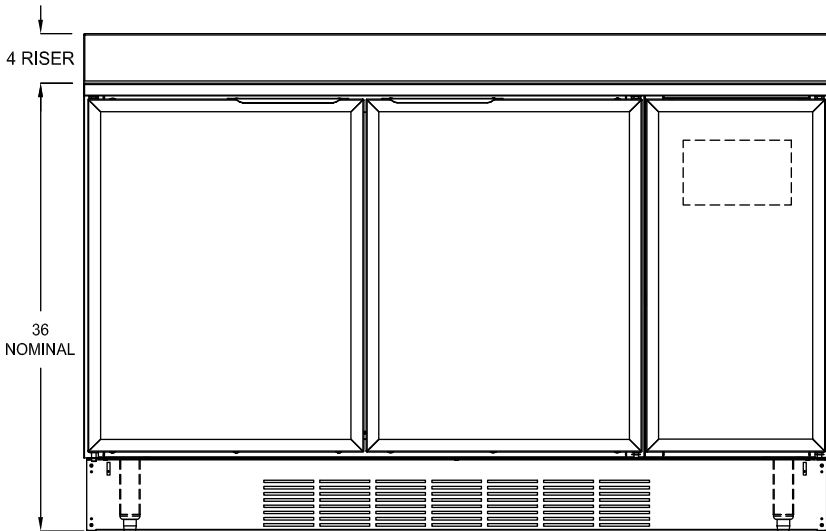
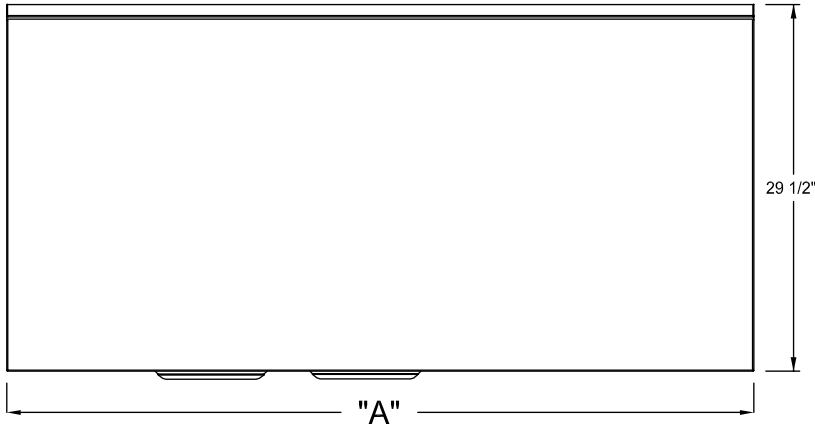
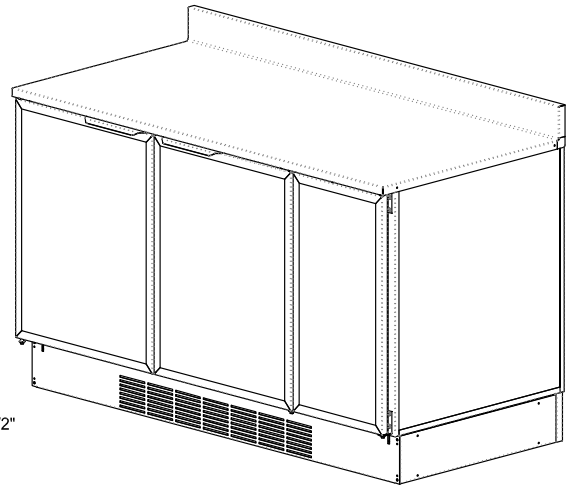
Catalog No. RBC 48-60

A.I.A. File No. 35-C-13

# Refrigerated Back Counter

A.I.A. File No. 35-C-13

Catalog No. RBC 48-60



**DIMENSIONS:**

**Freight Class: 100**

Model	Height		Width - A		Depth		Cube ft. crated	Crated Ship Weight	
	in.	cm	in.	cm	in.	cm		lbs.	kg
RBC-48-M	40"	101.6	48.0	121.9	29.5	74.93	77	344	156.04
RBC-60-M	40"	101.6	60.09	152.63	29.5	74.93	98	456	206.83

**ELECTRICAL SPECIFICATIONS:**

Model	120 Volt - HZ 60			220 Volt - HZ 60			230 Volt - HZ 50			230 Volt - HZ 50		
	Watts	Amps	Refrig.	Watts	Amps	Refrig.	Watts	Amps	Refrig.	Watts	Amps	Refrig.
RBC-48-M	530	4.4	R513A	616	2.8	134A	600	2.6	134A	530	2.3	R290
RBC-60-M	530	4.4	R513A	616	2.8	134A	575	2.5	134A	530	2.3	R290

REFRIGERATED BACK COUNTER: RBC-48-60M



**Duke Manufacturing Co.**  
2305 N. Broadway  
St. Louis, MO 63102

Phone: 314-231-1130  
Toll Free: 1-800-735-3853  
Fax: 314-231-5074

[www.dukemfg.com](http://www.dukemfg.com)